

MaherDuessel

Pursuing the profession while promoting the public good®

www.md-cpas.com

Generative AI:

Transforming the Modern Workplace and Everyday Life

BREANNA LENT, CPA

MAHER DUESSEL, SUPERVISOR

BENJAMIN CRAWFORD

IT CONSULTANT

December 11, 2024

MDCPA.CNF.IO

- ▶ Navigate to <https://mdcpa.cnf.io> and tap the session titled "2: Generative AI"
- ▶ OR just point your phone's camera at the QR code to join directly



OVERVIEW

- ❑ What is Generative AI (GenAI)?
- ❑ When did GenAI come on the scene?
- ❑ How is GenAI being used today?
- ❑ Why use GenAI?
- ❑ What to expect for the future of GenAI?
- ❑ Who are the major companies in GenAI?
- ❑ How is GenAI showing up in the corporate world?
- ❑ What accounting implications can it have?
- ❑ What are the challenges/safety concerns of GenAI?
- ❑ What does GenAI look like in everyday life?

Live Content Slide

When playing as a slideshow, this slide will display live content

Poll: What Generative AI Model have you used personally or corporately? (choose all that apply)

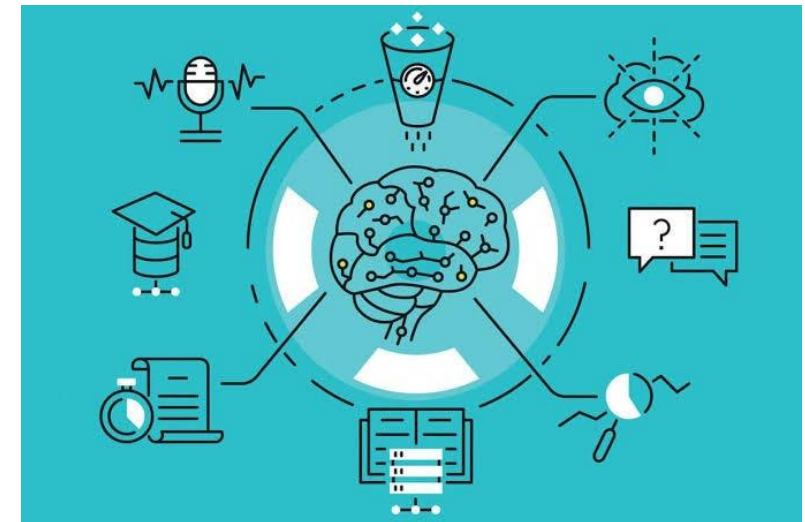
Live Content Slide

When playing as a slideshow, this slide will display live content

Poll: Would you pay for GenAI personally?

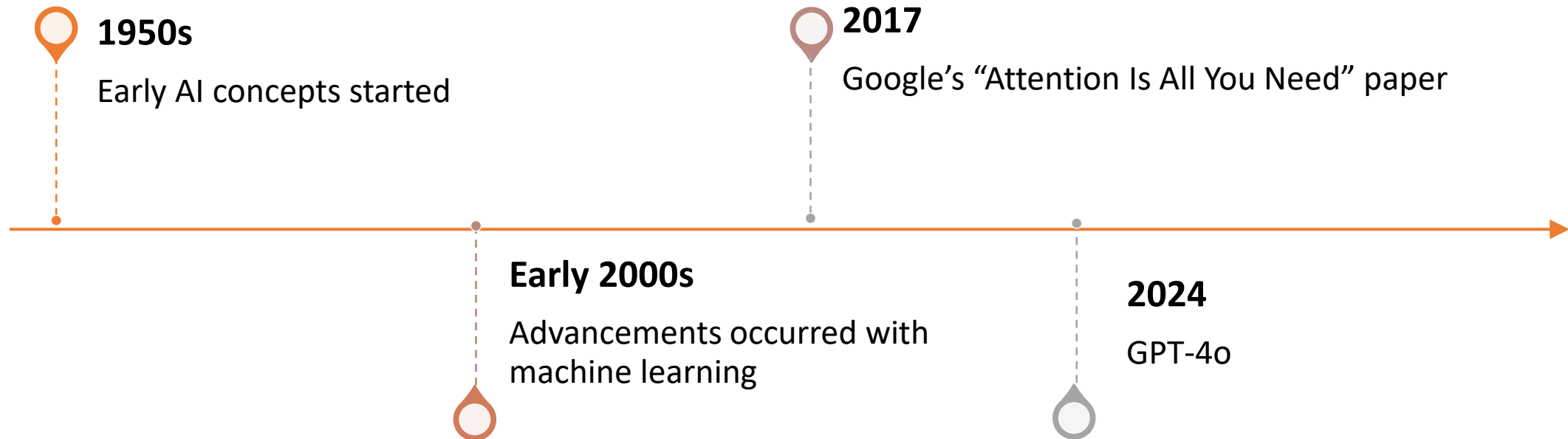
What is Generative AI?

- ❑ **Generative AI** refers to artificial intelligence models that can create new, original content, such as text, images, music, or even code, based on patterns learned from existing data. Unlike traditional AI, which focuses on recognizing patterns and making decisions, generative AI is creative and can produce outputs that mimic human-like creativity.
- ❑ What is LLM (Large Language Model)?
- ❑ What is ML (Machine Learning)?



When did GenAI come on the scene?

Fact Stat: Geoffrey Everest Hinton (born 6 December 1947) is a British-Canadian computer scientist, cognitive scientist, cognitive psychologist, known for his work on artificial neural networks which earned him the title as the "Godfather of AI".



How is GenAI being used today?

- ❑ Content Creation:
 - Writing articles, blog posts, and marketing copy
 - Generating visual content, such as illustrations, designs, and videos
- ❑ Business Applications:
 - Automating customer service with AI chatbots
 - Summarizing and analyzing large data sets for reports.
 - Assisting with coding and debugging in software development.
- ❑ Entertainment and Creativity:
 - Creating realistic virtual characters for games and movies.
 - Generating personalized music or artwork. (Spotify Wrapped Podcast)
- ❑ Everyday Tasks:
 - Drafting emails, scheduling meetings, and brainstorming ideas.
 - Translating languages and enhancing communication.

Fact Stat:
30% of U.S. adults can correctly identify specific uses of AI in everyday life.

Why use GenAI?

Purpose:

- ❑ To enhance creativity, efficiency, and productivity by automating repetitive or labor-intensive tasks
- ❑ To unlock new capabilities for humans, such as generating ideas or exploring creative possibilities

Value Proposition:

- ❑ Saves time and resources
- ❑ Democratizes access to advanced tools (e.g., enabling small businesses to use AI-driven insights)



Fact Stat: 63% of postgraduates and 57% of college graduates interact with generative AI tools at least several times a week.

What to Expect for the Future

- ❑ Greater Integration
 - Deeper embedding in tools like spreadsheets, ERP systems, and creative software
- ❑ Specialized Applications
 - Creation of domain-specific AI models tailored for healthcare, law, accounting, etc.
- ❑ Ethical and Responsible AI
 - Increased focus on transparency, bias reduction, and data privacy
- ❑ Next-Level Creativity
 - Hyper-realistic virtual environments for training, gaming, and entertainment
- ❑ Human-AI Collaboration
 - Humans focusing on higher-order tasks while AI handles repetitive work

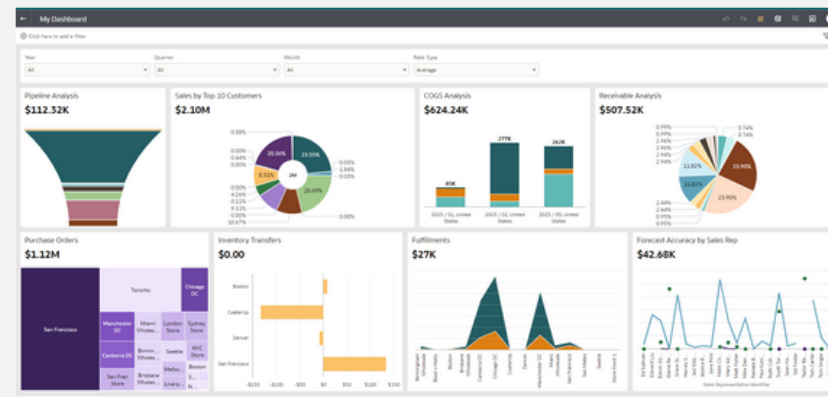
Fact Stat: The generative AI market will exceed \$1.3 trillion by 2032 thanks to the explosion of tools in recent years such as Google Gemini, ChatGPT, CoPilot, Midjourney and others.

Accounting ERP Systems

NetSuite Analytics Warehouse

What is NetSuite Analytics Warehouse?

NetSuite Analytics Warehouse is a cloud-based data storage and analytics solution that consolidates data from NetSuite and many other business applications for powerful analysis that drives actionable insights. Business professionals can load data and easily build and run their own analyses without relying on IT.

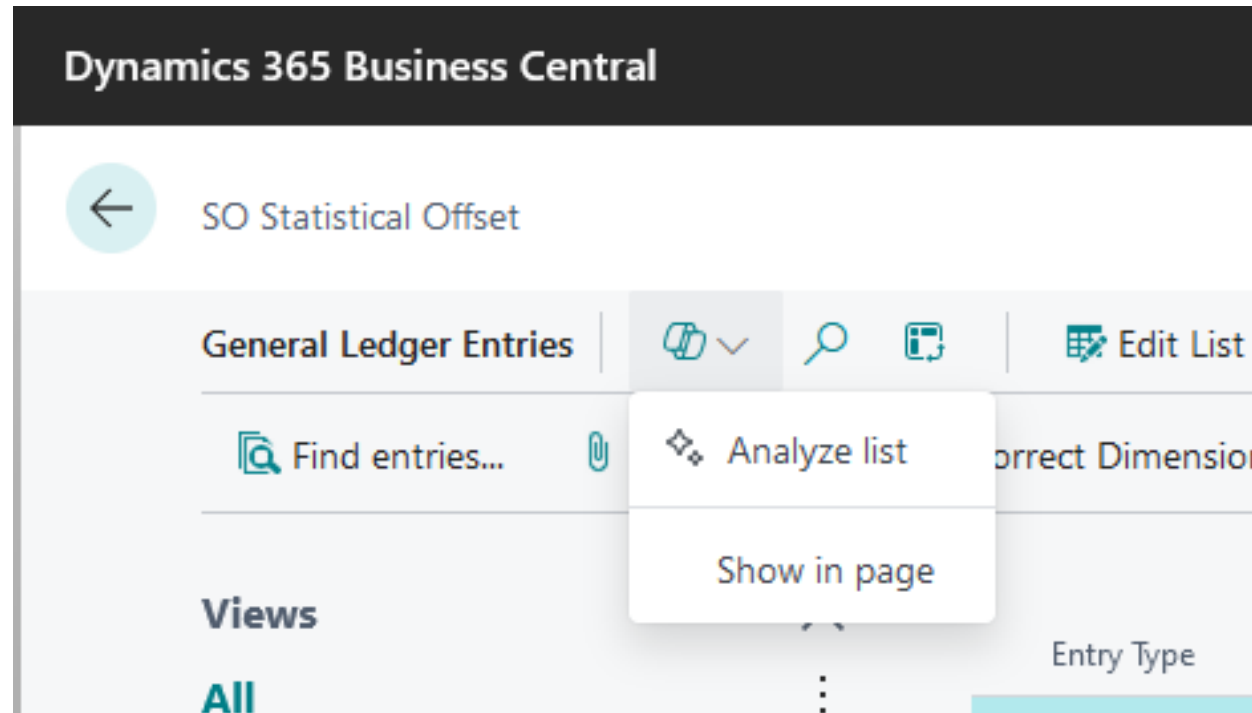


Faster, Accurate Reporting and Analysis

Process large, multi-source datasets quickly. Empower your people with access to self-service analytics and reporting so they can make better-informed decisions.

Accounting ERP Systems (cont.)

Microsoft Dynamics



Companies in GenAI



Meta



synthesia


Hugging Face



ANTHROPIC



GenAI in the Corporate World

- ❑ **Marketing:** Generating ad copy, content, and social media campaigns
- ❑ **Human Resources:** Automated resume screening and drafting job descriptions
- ❑ **Data Analysis:** Analyzing large datasets to identify patterns and generate insights, providing data-driven decision making
- ❑ **Workflow automation:** Automating repetitive tasks like data entry, scheduling meetings, and summarizing documents
- ❑ **Personalized learning:** Creating customized training modules based on individual employee needs
- ❑ **Research and development:** Assisting researchers by generating hypotheses, analyzing data, and summarizing scientific literature

Fact Stat: The generative AI market will exceed \$128 billion dollars by the end of 2024.

GenAI in the Accounting World

- ❑ **Automating Report Writing:** AI drafts financial summaries from raw data
- ❑ **Tax Preparation:** Streamlining tax filings with AI-driven analysis
- ❑ **Error Detection:** Identifying anomalies in large data sets
- ❑ **Budget Forecasting:** AI predicts trends based on historical data
- ❑ **Bookkeeping:** Automated data entry and invoice processing

Challenges of GenAI

Ethical Risks

- Bias in outputs reflecting training data
- Misuse for deepfakes and misinformation

Security Concerns

- Data privacy issues from large datasets
- Vulnerabilities to attacks like prompt injection
- AI-driven cyberattacks (e.g., phishing, malware)

Intellectual Property

- Ambiguity in ownership of AI-generated content
- Potential misuse of copyrighted training data

Fact Stat: 35% of high school teachers say generative AI tools do more harm than good for student learning.

Challenges of GenAI

Transparency Issues

- Lack of explainability in "black box" models
- Misalignment between AI outputs and intended goals.

Resource Concerns

- High energy and computational costs
- Accessibility gaps for smaller organizations

Regulation and Accountability

- Inconsistent regulatory frameworks
- Unclear liability for harmful AI outputs

Over-Reliance on AI

- Skill degradation in users
- Societal disruptions from job automation

Fact Stat: 74% of US consumers cite personal data security and privacy as their biggest concerns about genAI technology.

Safety Concerns

- ❑ Shadow AI
- ❑ Generative AI Acceptable Use Policy
 - How do you want your employees to be using AI?
 - Suggestion: Reference NIST

Fact Stat: 61% of organizations lack guidelines for using generative AI tools.



Fun Prompts to ask ChatGPT

- ❑ Write out your future goals, give them to ChatGPT and then ask it to tell you a story of what a day in the life of your future-self would look like if you have already achieved them. Then ask ChatGPT to create a roadmap to get to that day.
- ❑ Based on your memory, ask me 10 questions that will help fill any of my knowledge gaps you have noticed or what are some book suggestions you have for me to improve my life.
- ❑ What do you know about me that I might not know about myself?
- ❑ “Create a ‘30-day challenge’ for a skill I want to learn or improve.”

Everyday Use Ideas

- ❑ Learn a new language
- ❑ Create an itinerary for a trip
- ❑ Create a meal plan
- ❑ Help with homework (tutor)
- ❑ Create fun photos →



Key Takeaways

- ❑ Brainstorm ways GenAI can help your organization
 - Study performed analyzed 50 companies utilizing AI tools for accounting tasks resulting in:
 - 72% average reduction in time spent on repetitive accounting tasks like data entry and report generation
 - 65% average improvement in accuracy of financial statements and analysis
 - 53% average decrease in accounting staff costs
 - AI can realistically increase productivity by 14% - 50% on average based on user experience.
- ❑ Create an AI policy along with your IT policy
- ❑ Is this a SBITA (GASB96)?

Live Content Slide

When playing as a slideshow, this slide will display live content

Poll: Do you see value in incorporating GenAI into your workplace?

ChatGPT, Gemini, CoPilot, and Midjourney

“AI Cuts Accounting Costs with Automation Study” by Santiago Poli

<https://www.learningrevolution.net/generative-ai-facts-and-stats/>

<https://www.nojitter.com/ai-automation/what-generative-ai-and-how-it-can-increase-productivity#:~:text=GENERATIVE%20AI%20AT%20WORK%20in,experienced%20and%20highly%20skilled%20workers.>

<https://www.nojitter.com/ai-automation/what-generative-ai-and-how-it-can-increase-productivity#:~:text=GENERATIVE%20AI%20AT%20WORK%20in,experienced%20and%20highly%20skilled%20workers.>

<https://www.usemotion.com/blog/ai-increase-productivity#:~:text=Employees%20who%20aren't%20spending,the%20quality%20of%20work%20produced.>

<https://masterofcode.com/blog/generative-ai-in-accounting>

REFERENCES

CONTACT INFORMATION

Contact us!



Breanna Lent, CPA
412.535.5543
BLent@md-cpas.com



Benjamin Crawford
724.549.1389
Ben.crawford9@gmail.com

Don't Forget To
Check-Out Before
You Leave!

